

TECHNICAL NOTE - D.7.47

DATE:	04 July 2023	CONFIDENTIALITY:	Public
SUBJECT:	Change Request 3 – Environment Technical Note		
PROJECT:	HyNet - DCO	AUTHOR:	Various
CHECKED:	MT	APPROVED:	CL

INTRODUCTION

An Environmental Statement (ES) was submitted to the Planning Inspectorate (‘the Inspectorate’) in October 2022 as part of a Development Consent Order (DCO) application (EN070007) for the HyNet Carbon Dioxide Pipeline development (hereafter referred to as the ‘DCO Proposed Development’). A Consolidated ES was subsequently issued at Deadline 4, this incorporated proposed changes that had been accepted by the ExA as part of Change Request 1 [CR1-124] and Change Request 2 [CR2-017]. The consolidated ES (hereafter referred to as the ‘ES’) sets out the findings of the full Environmental Impact Assessment (EIA) that was carried out for the DCO Proposed Development.

This Technical Note has been produced to evidence that the environmental impacts of the changes proposed to the DCO Proposed Development as part of Change Request 3 have been appropriately assessed with any likely significant environmental effects identified, and to satisfy the requirements of the Infrastructure Planning (EIA) Regulations 2017 (as amended).

The following changes are proposed to the DCO Proposed Development as part of Change Request 3:

- PS27 - Removal of Shotton Lane Centralised Compound and reduction to Newbuild Infrastructure Boundary
- PS28 - Change to Outline Surface Water Drainage Design and reduction to Newbuild Infrastructure Boundary at Ince AGI
- PS29 - Reduced Newbuild Infrastructure Boundary at Picton Lane
- PS30 - Change to application of compulsory powers for Encirc land access

The proposed changes are described below.

PS27 - REMOVAL OF SHOTTON LANE CENTRALISED COMPOUND AND REDUCTION TO NEWBUILD INFRASTRUCTURE BOUNDARY

The Applicant is proposing a change to the proposed DCO Proposed Development as a result of continuing engagement with the landowner. This change would see the removal of the Shotton Lane Centralised Compound (Work No. 41A in **Figure A1** in **Annex A**).

The removal of the Temporary Logistics and Construction Compound (Work No.41A), and removal of the Temporary Working Area (Work No. 41D) requires the extension of the

TECHNICAL NOTE - D.7.47

DATE:	04 July 2023	CONFIDENTIALITY:	Public
SUBJECT:	Change Request 3 – Environment Technical Note		
PROJECT:	HyNet - DCO	AUTHOR:	Various
CHECKED:	MT	APPROVED:	CL

Temporary Access (Work No. 41B) to meet the Carbon Dioxide Pipeline Works (Work No. 41), to ensure access is maintained. This will result in the removal of land from the Order Limits (specifically land parcels 18-08, 18-09, 18-12 and the partial removal of parcel 18-13), and no new land will be impacted (**Figure A2 in Annex A**).

PS28 - CHANGE TO OUTLINE SURFACE WATER DRAINAGE DESIGN AND REDUCTION TO NEWBUILD INFRASTRUCTURE BOUNDARY AT INCE AGI

The Applicant proposes the removal of Plot 1-07 (**Figure A3 in Annex A**) and updates to the Outline Surface Water Drainage Strategy (**Figure A4 in Annex A**), due to the request from the interested landowners to avoid the outfall for the Ince AGI drainage pond connecting into the East Central Drain.

PS29 - REDUCED NEWBUILD INFRASTRUCTURE BOUNDARY AT PICTON LANE ACCESS ROAD

The Applicant proposes removal of land from the Order Limits at Picton Lane to minimise land take required for construction and operational access at Work No. 16A and Work No. 16B, and to bring the Order Limits in line with the land plot changes, submitted at Deadline 4, made at the landowner's request.

The Applicant has reviewed the land associated with the haul route at Picton Lane (plot 7-02 and plot 7-03) and concluded that the allocated land can be reduced.

PS30 - CHANGE TO APPLICATION OF COMPULSORY POWERS FOR ENCIRC ACCESS

The Applicant proposes downgrading of part of Plot 1-06 from permanent acquisition of rights to temporary possession of land to form a new Plot 1-06d in response to the Landowner's concerns regarding access [**CR1RR-005, REP3-050, REP4-280**] and developed during ongoing engagement with them (**Figure A6 in Annex A**). Associated Works Plans updates have been made, partially splitting Work No. 3, creating a new Work No. 3A (downgraded from Permanent Access to Temporary Access) and Work No. 3B (remains a Permanent Access but is now functionally independent and as such warrants its own Work Number).

TECHNICAL NOTE - D.7.47

DATE:	04 July 2023	CONFIDENTIALITY:	Public
SUBJECT:	Change Request 3 – Environment Technical Note		
PROJECT:	HyNet - DCO	AUTHOR:	Various
CHECKED:	MT	APPROVED:	CL

SUMMARY OF ES UPDATES INCLUDED IN THIS TECHNICAL NOTE

A summary of the changes to the ES is provided in **Table 1** below. Where no material change is reported or updates to text or assessment is required, no additional text regarding that topic has been included within this Technical Note.

TECHNICAL NOTE - D.7.47

DATE:	04 July 2023	CONFIDENTIALITY:	Public
SUBJECT:	Change Request 3 – Environment Technical Note		
PROJECT:	HyNet - DCO	AUTHOR:	Various
CHECKED:	MT	APPROVED:	CL

Table 1 - Summary of ES updates included in this Technical Note

Examination Library Reference	Document	Summary of updates included in this Technical Note, where required
REP4-024	D.6.1 Environmental Statement - Non-Technical Summary	No material change reported or updates to text required for PS28, PS29 and PS30. No material change reported but updates to the text within the Non-Technical Summary is required for PS27 (see below).
REP4-025	D.6.1a Environmental Statement - Non-Technical Summary (Welsh Translation)	As per Non-Technical Summary [REP4-024] above.
REP4-027	D.6.2.1 Environmental Statement Volume II – Chapter 1 Introduction	No material change reported or updates required to text for PS27, PS28, PS29 and PS30.

TECHNICAL NOTE - D.7.47

DATE: 04 July 2023 **CONFIDENTIALITY:** Public
SUBJECT: Change Request 3 – Environment Technical Note
PROJECT: HyNet - DCO **AUTHOR:** Various
CHECKED: MT **APPROVED:** CL

Examination Library Reference	Document	Summary of updates included in this Technical Note, where required
REP4-028	D.6.2.2 Environmental Statement Volume II – Chapter 2 The Project	No material change reported or updates required to text for PS27, PS28, PS29 and PS30.
REP4-029	D.6.2.3 Environmental Statement Volume II – Chapter 3 Description of the Proposed Development	No material change reported or updates required to text for PS29 and PS30. No material change reported but updates to the text within the Chapter 3 is required for PS27 and PS28 (see below).
REP4-031	D.6.2.4 Environmental Statement Volume II – Chapter 4 Consideration of Alternatives	No material change reported or updates required to text for PS28, PS29 and PS30. No material change reported but updates to the text within Chapter 4 is required for PS27 (see below).
REP4-033	D.6.2.5 Environmental Statement Volume II –	No material change reported or updates required to text for PS27, PS28, PS29 and PS30.

TECHNICAL NOTE - D.7.47

DATE: 04 July 2023 **CONFIDENTIALITY:** Public
SUBJECT: Change Request 3 – Environment Technical Note
PROJECT: HyNet - DCO **AUTHOR:** Various
CHECKED: MT **APPROVED:** CL

Examination Library Reference	Document	Summary of updates included in this Technical Note, where required
	Chapter 5 EIA Methodology	
REP4-035	D.6.2.6 Environmental Statement Volume II – Chapter 6 Air Quality	No material change reported or updates required to assessments for PS28, PAS29 and PS30. No material change reported but updates to assessments within Chapter 6 are required for PS27 (see below).
REP4-038	D.6.2.7 Environmental Statement Volume II – Chapter 7 Climate Resilience	No material change reported or updates to assessments within Chapter 7 required for PS27, PS28, PS29 and PS30.
REP4-039	D.6.2.8 Environmental Statement Volume II – Chapter 8 Cultural Heritage	No material change reported or updates to assessments within Chapter 8 required for PS27, PS28, PS29 and PS30.

TECHNICAL NOTE - D.7.47

DATE:	04 July 2023	CONFIDENTIALITY:	Public
SUBJECT:	Change Request 3 – Environment Technical Note		
PROJECT:	HyNet - DCO	AUTHOR:	Various
CHECKED:	MT	APPROVED:	CL

Examination Library Reference	Document	Summary of updates included in this Technical Note, where required
REP4-041	D.6.2.9 Environmental Statement Volume II – Chapter 9 Biodiversity	No material change reported or updates to assessments within Chapter 9 required for PS27, PS29 and PS30. No material change reported but updates to assessments within Chapter 9 are required for PS28 (see below).
REP4-043	D.6.2.10 Environmental Statement Volume II – Chapter 10 Greenhouse Gases	No material change reported or updates to assessments within Chapter 10 required for PS27, PS28, PS29 and PS30.
REP4-045	D.6.2.11 Environmental Statement Volume II – Chapter 11 Land and Soils	No material change reported or updates to assessments within Chapter 11 required for PS27, PS28, PS29 and PS30.
REP4-048	D.6.2.12 Environmental Statement Volume II –	No material change reported or updates to assessments within Chapter 12 required for PS29 and PS30. No material change reported but updates to Ince AGI

TECHNICAL NOTE - D.7.47

DATE:	04 July 2023	CONFIDENTIALITY:	Public
SUBJECT:	Change Request 3 – Environment Technical Note		
PROJECT:	HyNet - DCO	AUTHOR:	Various
CHECKED:	MT	APPROVED:	CL

Examination Library Reference	Document	Summary of updates included in this Technical Note, where required
	Chapter 12 Landscape and Visual	Landscape Layouts [CR1-008] are required for PS28. No material change reported but updates to assessments within Chapter 12 are required for PS27 (see below).
REP4-049	D.6.2.13 Environmental Statement Volume II – Chapter 13 MA&D	No material change reported or updates to assessments within Chapter 13 required for PS27, PS28, PS29 and PS30.
REP4-052	D.6.2.14 Environmental Statement Volume II – Chapter 14 Material Assets and Waste	No material change reported or updates to assessments within Chapter 14 required for PS27, PS28, PS29 and PS30.
REP4-053	D.6.2.15 Environmental Statement Volume II – Chapter 15 Noise and Vibration	No material change reported or updates to text within Chapter 15 required for PS28, PS29 and PS30. No material change reported but updates to assessments within Chapter 15 are required for PS27 (see below).

NON-TECHNICAL SUMMARY

PS27 – REMOVAL OF SHOTTON LANE CENTRALISED COMPOUND

The removal of Shotton Lane Centralised Compound will reduce the number of centralised compounds on the DCO Proposed Development from seven to six. Therefore **paragraph 3.2.4** of the **Non-Technical Summary [REP4-023]** will change to state ‘... *Six main compounds, known as centralised compounds, will be located at key locations along the route of the proposed development ...*’

The removal of Shotton Lane Centralised Compound will remove significant visual effects at viewpoint P3. Therefore, the significant effects during the construction stage will reduce from 29 to 28 visual receptors. Therefore **paragraph 5.7.8** of the **Non-Technical Summary [REP4-023]** will change to state ‘... *Significant effects are also predicted upon 28 visual receptors located broadly throughout the route ...*’

CHAPTER 3 – DESCRIPTION OF THE DCO PROPOSED DEVELOPMENT

PS27 – REMOVAL OF SHOTTON LANE CENTRALISED COMPOUND

The removal of Shotton Lane Centralised Compound will require updates to **Section 3.6 – Construction of the DCO Proposed Development** of **Chapter 3 [REP4-029]**.

CONSTRUCTION OF THE DCO PROPOSED DEVELOPMENT

Shotton Lane Centralised Compound (Work Number 41A) will be removed from **paragraphs 3.6.8, 3.6.9** and **Table 3.3** of **Chapter 3 [REP4-029]**.

Paragraph 3.6.11 of **Chapter 3 [REP4-029]** will be changed to state that ‘*six Centralised Compounds will be established ...*’ and ‘*although 7 centralised compounds are being assessed in the EIA, only 6 are expected to be implemented to facilitate construction of the DCO Proposed Development.*’

Paragraph 3.6.106 of **Chapter 3 [REP4-029]** will be changed to state that ‘*although 7 centralised compounds are being assessed in the EIA, only 6 are expected to be implemented to facilitate construction of the DCO Proposed Development.*’

Sheet 5 of **Figure 3.2 [REP4-188]** will be updated to remove Shotton Lane Centralised Compound next to Holywell Road.

PS28 - CHANGE TO OUTLINE SURFACE WATER DRAINAGE DESIGN AT INCE AGI

The change to the Outline Surface Water Drainage Design at Ince AGI will require updates to **Section 3.4. Above Ground Infrastructure of Chapter 3 [REP4-029]**.

ABOVE GROUND INFRASTRUCTURE

Paragraph 3.4.12 of Chapter 3 [REP4-029] will be changed to state *'The OSWDS (Document Ref: D.6.5.13) assumes for Ince AGI that discharge would be to Elton Lane Ditch 1 via an infiltration trench on the gravelled areas, vegetated attenuation pond and filter channel.'*

CHAPTER 4 – CONSIDERATION OF ALTERNATIVES

PS27 – REMOVAL OF SHOTTON LANE CENTRALISED COMPOUND

The removal of Shotton Lane Centralised Compound will require updates to **Section 4.8 – Construction Compound Alternatives of Chapter 4 [REP4-031]**.

CONSTRUCTION COMPOUND ALTERNATIVES

The Construction Design Evolution for Shotton Lane Compound in **Table 4.7 of Chapter 4 [REP4-031]** will change to state *'removed from DCO Proposed Development following agreement with landowner'*.

CHAPTER 6 – AIR QUALITY

PS27 – REMOVAL OF SHOTTON LANE CENTRALISED COMPOUND

The removal of Shotton Lane Centralised Compound will not require any updates to **Chapter 6 - Air Quality [REP4-035]**. However, updates are required to **Appendix 6.1 - Construction Dust Assessment [REP4-077]**.

APPENDIX 6.1 - CONSTRUCTION DUST ASSESSMENT

Paragraph 3.1.4 will be changed to state that *'Current forecasted construction traffic flows indicate that there will be less than 170 LGVs and 50 HGVs at any individual point on the road network, as an annual average daily flow. The highest flows occur on the B1259, A5104 and Manor Lane. These flows are below the IAQM screening threshold and, therefore, it is unlikely that construction traffic will cause a significant air quality effect.'*

Sheet 6 of Figure 6.1 [REP4-210] will be updated to reduce the Newbuild Infrastructure Boundary and subsequent buffers as a result of removing Shotton Lane Centralised Compound.

CONCLUSION

The removal of Shotton Lane Centralised Compound will not result in changes to the likely significant effects as reported in **Chapter 6 - Air Quality [REP4-035]**. Therefore, the conclusions are not materially changed for this topic.

CHAPTER 9 BIODIVERSITY

PS28 - CHANGE TO OUTLINE SURFACE WATER DRAINAGE DESIGN AT INCE AGI

The change to the Outline Surface Water Drainage Design and reduction to the Newbuild Infrastructure Boundary at Ince AGI will require updates to **Section 9.6 Baseline Conditions of Chapter 9 [REP4-041]**.

SECTION 9.6 BASELINE CONDITIONS

The change to the Outline Surface Water Drainage Design and reduction to the Newbuild Infrastructure Boundary at Ince AGI will result in some of the impacts to the coastal and floodplain grazing marsh habitat (priority habitat) being reduced. Therefore, the areas calculated in **Table 9.7 of Chapter 9 [REP4-041]** and in the **Biodiversity Net Gain (BNG) Assessment [REP3-022]** will be updated to reflect this. These updates will be made to the ES and BNG assessment at end of examination.

CONCLUSIONS

The change to the Outline Surface Water Drainage Design and reduction to the Newbuild Infrastructure Boundary at Ince AGI will not result in changes to the likely significant effects as reported in **Chapter 9 - Air Quality [REP4-041]**. Therefore, the conclusions are not materially changed for this topic.

CHAPTER 12 – LANDSCAPE AND VISUAL

PS27 – REMOVAL OF SHOTTON LANE CENTRALISED COMPOUND

The removal of Shotton Lane Centralised Compound will result in localised changes to landscape and visual effects during the construction stage reported in **Section 12.9 – Assessment of Likely Impacts and Effects of Chapter 12 [REP4-047]** and **Appendix 12.4 – Visual Analysis [REP4-141]**.

ASSESSMENT OF LIKELY IMPACTS AND EFFECTS

Construction Landscape Effects

Shotton Lane Centralised Compound is located in the Estuary Edge and Valleys (FLNTVS014) landmap aspect area of **Table 12.6 of Chapter 12 [REP4-047]**. The removal of Shotton Lane Centralised Compound would result in a reduction of localised landscape impacts but the overall effect on the Estuary Edge and Valleys (FLNTVS014) aspect area from the DCO Proposed Development during the construction stage will not change and remain as ***Moderate Adverse (significant)***.

Construction Visual Effects

Shotton Lane Centralised Compound would be visible from Viewpoints P3 and P4b in **Table 12.7 of Chapter 12 [REP4-047]**.

Viewpoint P3 represents the visual experience of residents off Holywell Road and recreational users of Public Footpath Hawarden 144 at a distance of approximately 125m from the Newbuild Infrastructure Boundary. Removal of Shotton Lane Centralised Compound would reduce the visual effect from ***Moderate adverse (significant)*** to ***Negligible adverse*** for Viewpoint P3.

Viewpoint P4b represents the visual experience of residents off Old Aston Hill, Ewloe located adjacent to the Newbuild Infrastructure Boundary. Removal of Shotton Lane Centralised Compound would reduce visual effects but close range views of construction activity associated with the DCO Proposed Development would remain and the visual effect would remain as ***Moderate adverse (significant)***.

APPENDIX 12.4 - VISUAL ANALYSIS

The Construction Magnitude and Effect & Construction Night-time Magnitude and Effect for Viewpoint P3 in **Table 1 of Appendix 12.4 [REP4-141]** will be updated and the overall effect reduced from ***Moderate adverse (significant)*** to ***Negligible adverse***.

CONCLUSION

The removal of Shotton Lane Centralised Compound will reduce likely significant effects as reported in **Chapter 12 – Landscape and Visual [REP4-047]** from moderate adverse (significant) to negligible adverse for Viewpoint P3. However, moderate adverse landscape and visual effects will remain across the DCO Proposed Development during construction. Therefore, the conclusions of the ES for this topic are not materially changed.

CHAPTER 15 – NOISE AND VIBRATION

PS27 – REMOVAL OF SHOTTON LANE CENTRALISED COMPOUND

The removal of Shotton Lane Centralised Compound will not require any updates to **Chapter 15 – Noise and Vibration [REP4-053]**. However, updates are required to **Appendix 15.3 - Noise and Vibration Assessment Results [REP4-150]**.

APPENDIX 15.3 - NOISE AND VIBRATION ASSESSMENT RESULTS

Slight changes will be required to the values presented in Link IDs 8, 9, 10, 11, 12, 29, 30 and 32 in **Table 8 of Appendix 15.3 Noise and Vibration Assessment Results [REP4-150]**. These are non-material changes when considered in the assessment.

CONCLUSION

The removal of Shotton Lane Centralised Compound will not result in changes to the likely significant effects as reported in **Chapter 15 – Noise and Vibration [REP4-053]**. Therefore, the conclusions are not materially changed for this topic.

CHAPTER 17 – TRAFFIC AND TRANSPORT

PS27 – REMOVAL OF SHOTTON LANE CENTRALISED COMPOUND

The removal of Shotton Lane Centralised Compound will result in a reduction in construction traffic on the construction traffic routes serving Shotton Lane, although construction traffic will potentially increase on the construction traffic routes serving the two adjacent compounds (Northop Hall and Sandycroft). Therefore, updates are required to **Section 17.9 – Assessment of Likely Impacts and Effects of Chapter 17 [REP4-057]** and **Appendices 17.6 to 17.9 [REP4-160 to REP4-163]**, **17.11 [REP4-165]**, **17.13 [REP4-167]** and **17.14 [REP4-169]**.

ASSESSMENT OF LIKELY IMPACTS AND EFFECTS

The change in construction traffic on construction traffic routes as a result of the removal of Shotton Lane Centralised Compound requires the following updates to **Table 17.8 of Chapter 17 [REP4-057]**:

- Link Ref 9 - B5125 1: Severance, Fear and Intimidation and Driver Delay would reduce from Medium to Negligible.
- Link Ref 11 - B5126: Severance, Fear and Intimidation and Driver Delay would increase from Negligible to Low.

- Link Ref 12 - A5119 1: Severance, Fear and Intimidation and Driver Delay would increase from Negligible to Low.

Link Ref 11 (B5126) and 12 (A5119 1) will result in Low magnitudes for Severance, Fear and Intimidation and Driver Delay which is not significant and will not require additional mitigation measures.

APPENDIX 17.6 SECTION BY SECTION DESCRIPTIONS

Table 5 in **Appendix 17.6 [REP4-160]** will require an update to remove reference to the Shotton Lane Centralised Compound in the Overview section. This is a non-material change linked to project description rather than assessment.

APPENDIX 17.7 CONSTRUCTION TRAFFIC FLOWS

Table 1 in **Appendix 17.7 [REP4-161]** will require an update to Links 8, 9, 10, 11, 12, 29, 30 and 32 requiring revised data to be reported. This is a non-material change when considered in the assessment.

APPENDIX 17.8 CONSTRUCTION TRAFFIC PROFILES

Insert 3 in **Appendix 17.8 [REP4-162]** will require revised data for Links 8, 9, 10, 11, 12, 29, 30 and 32. **Insert 4** in **Appendix 17.8 [REP4-162]** required updating to reflect the removal of Shotton Lane compound from the Centralised Compound AADT graph. These are non-material changes when considered in the assessment.

APPENDIX 17.9 FUTURE YEAR TRAFFIC FLOWS

Table 1 in **Appendix 17.9 [REP4-163]** will require an update to Links 8, 9, 10, 11, 12, 29, 30 and 32. This is a non-material change when considered in the assessment.

APPENDIX 17.11 SUMMARY OF PRE-MITIGATION CALCULATED EFFECTS

Tables 1, 2 and 4 in **Appendix 17.11 [REP4-165]** will require an update to Links 8, 9, 10, 11, 12, 29, 30 and 32. This is a non-material change when considered in the assessment.

APPENDIX 17.13 TRANSPORT ASSESSMENT

Appendix 17.13 [REP4-167] will require the following amendments and updates:

- **Paragraph 5.2.4** should be changed to state that '*there are six proposed Centralised Compounds to complete the works...*'
- **Table 7** makes reference to mitigation measures associated with the Shotton Lane compound which are no longer required.

- **Paragraph 8.3.11** will be updated to state *'It is therefore proposed to restrict HGV movements accessing the DCO proposed Development at this location at peak times to avoid contributing the issue experienced in this location.'*

These are non-material changes when considered in the assessment.

APPENDIX 17.14 INTERIM WORKER TRAVEL PLAN

Paragraphs 3.2.1 and 7.1.2 of Appendix 17.14 [REP4-169] will require an update to state 'Six Centralised Compounds will be established along the pipeline Working Width ...'. This is a non-material change when considered in the assessment

Sheet 5 of Figure 17.4 - Construction Traffic Routes [REP4-227] will require an update to remove Shotton Lane Centralised Compound. This is a non-material change when considered in the assessment.

Sheet 5 of Figure 17.5 Access Locations [REP4-228] will require an update to remove Shotton Lane Centralised Compound. This is a non-material change when considered in the assessment.

CONCLUSION

The removal of Shotton Lane Centralised Compound will not result in changes to the likely significant effects as reported in **Chapter 17 – Traffic and Transport [REP4-057]**. Therefore, the conclusions are not materially changed for this topic

PS30 - CHANGE TO APPLICATION TO COMPULSORY POWERS FOR ENCIRC ACCESS

The change to land plots at Encirc access requires minor updates to **Figure 17.5 – Access Locations [REP4-228]** and **Annexes B and C of the Outline Construction Traffic Management Plan [REP2-019]**. The update would change the access status from permanent to temporary access required associated with Plot 1-06d / new Work No. 3A.

CONCLUSION

The change to land plots at Ince AGI / Encirc access will not result in changes to the likely significant effects as reported in **Chapter 17 – Traffic and Transport [REP4-057]**. Therefore, the conclusions are not materially changed for this topic

CHAPTER 18 WATER RESOURCE AND FLOOD RISK

PS28 - CHANGE TO OUTLINE SURFACE WATER DRAINAGE DESIGN AT INCE AGI

The change to the Outline Surface Water Drainage Design and reduction to the Newbuild Infrastructure Boundary at Ince AGI will require updates to **Section 18.6 Baseline Conditions of Chapter 18 [REP4-059]** and **Appendix 18.1 [REP4-170]** and **Appendix 18.2 [REP4-172]**.

BASELINE CONDITIONS

Peckmill Brook, Hoolpool Gutter and Ince Marshes WFD water body name in **Table 18.10 of Chapter 18 [REP4-059]** is updated with *'The Ince AGI is located within this water body. Elton Lane Ditch 1 is within this water body and is proposed to receive runoff from Ince AGI drainage system. Three main rivers and seven ditches will be crossed by the Newbuild Carbon Dioxide Pipeline.'*

APPENDIX 18.1 - BASELINE

Interaction with the DCO Proposed Development in **Section 2.1. East Central Drain of Appendix 18.1 [REP4-170]** is updated with *'Ince AGI is located within 8m of this watercourse.'*

Interaction with the DCO Proposed Development in **Section 3.2. Elton Lane Ditch 1, 2, 4 and 6 of Appendix 18.1 [REP4-170]** is updated with *'Elton Lane Ditch 1 and 4 will be crossed by the Newbuild Carbon Dioxide Pipeline via open cut. Other ditches are located within the Newbuild Infrastructure Boundary. Elton Lane Ditch 1 is currently culverted beneath a field access. This culvert will be replaced with a longer culvert to provide permanent access to Ince AGI. Ince AGI is located within 10m of Elton Lane Ditch 1 and 2. The surface water drainage system from Ince AGI will discharge to Elton Lane Ditch 1.'*

APPENDIX 18.2 - SUMMARY OF EFFECTS

Table 1.1 of Appendix 18.2 [REP4-172] will be updated to remove East Central Drain from the 'Outfall' activity under Medium sensitivity and add Elton Lane Ditch 1 to the 'Outfall' activity under Low sensitivity.

Paragraph 2.2.21 of Appendix 18.2 [REP4-172] will be updated to remove 'East Central Drain' and replaced with 'Elton Lane Ditch 1'.

Tables 4.14 and 4.15 of Appendix 18.2 [REP4-172] will be updated to remove 'East Central Drain' as a medium receptor and replaced with 'Elton Lane Ditch 1' as a low receptor.

CONCLUSION

The change to the Outline Surface Water Drainage Design and reduction to the Newbuild Infrastructure Boundary at Ince AGI will not result in changes to the likely significant effects as reported in **Chapter 18 Water Resource and Flood Risk [REP4-059]**. Therefore, the conclusions are not materially changed for this topic.

CHAPTER 20 – SUMMARY OF LIKELY SIGNIFICANT EFFECTS

PS27 – REMOVAL OF SHOTTON LANE CENTRALISED COMPOUND

The removal of Shotton Lane Centralised Compound will remove significant visual effects at Viewpoint P3 during the construction stage. Therefore, visual amenity receptor P3 during the construction stage will be removed from **Table 20.1** of **Chapter 20 [REP4-063]**.

ANNEX A - FIGURES

Figure A1 – Before and after the removal of Shotton Lane Centralised Compound and reduction to Newbuild Infrastructure Boundary – Works Plan

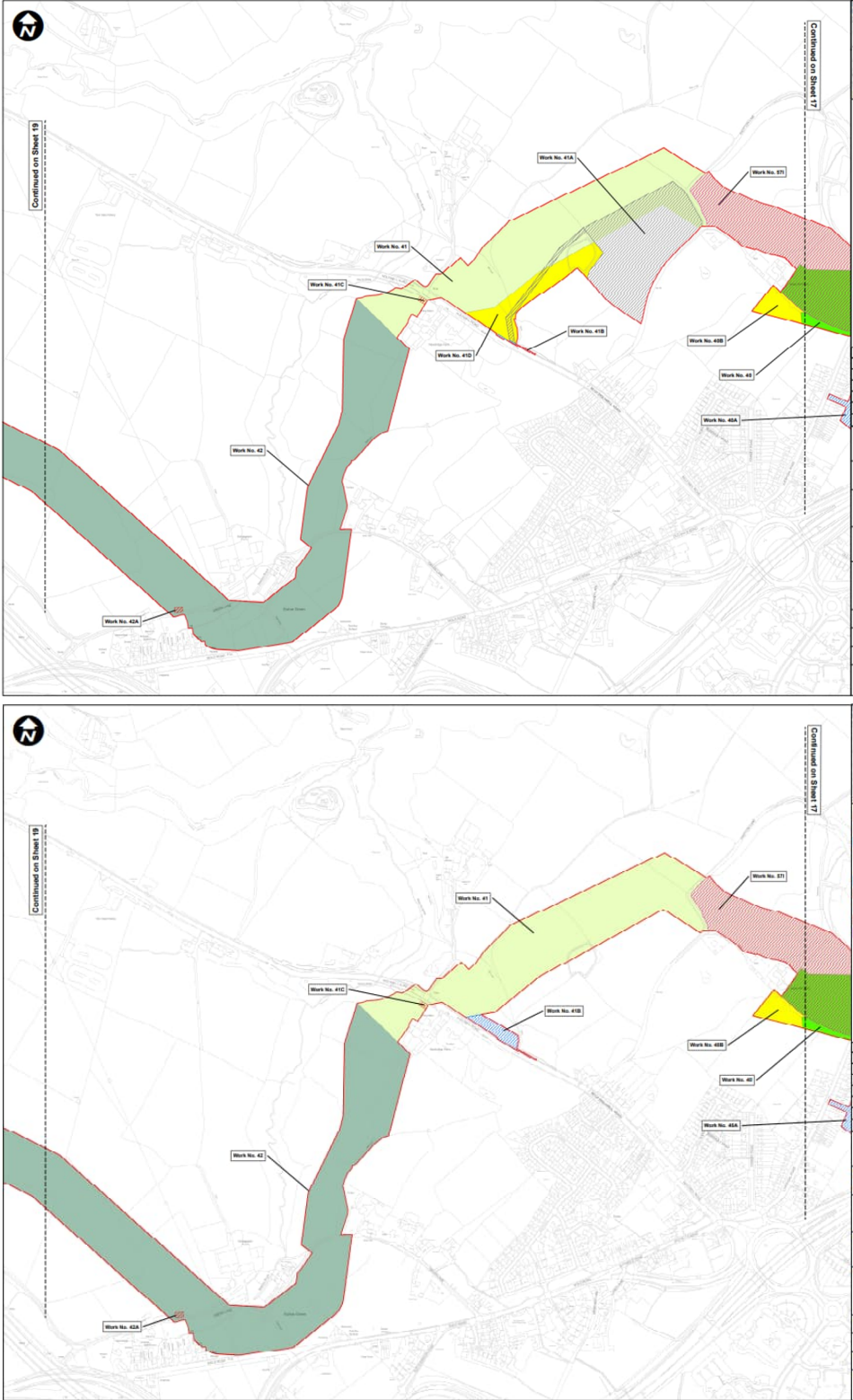


Figure A2 – Before and after the removal of Shotton Lane Centralised Compound and reduction to Newbuild Infrastructure Boundary – Land Plan

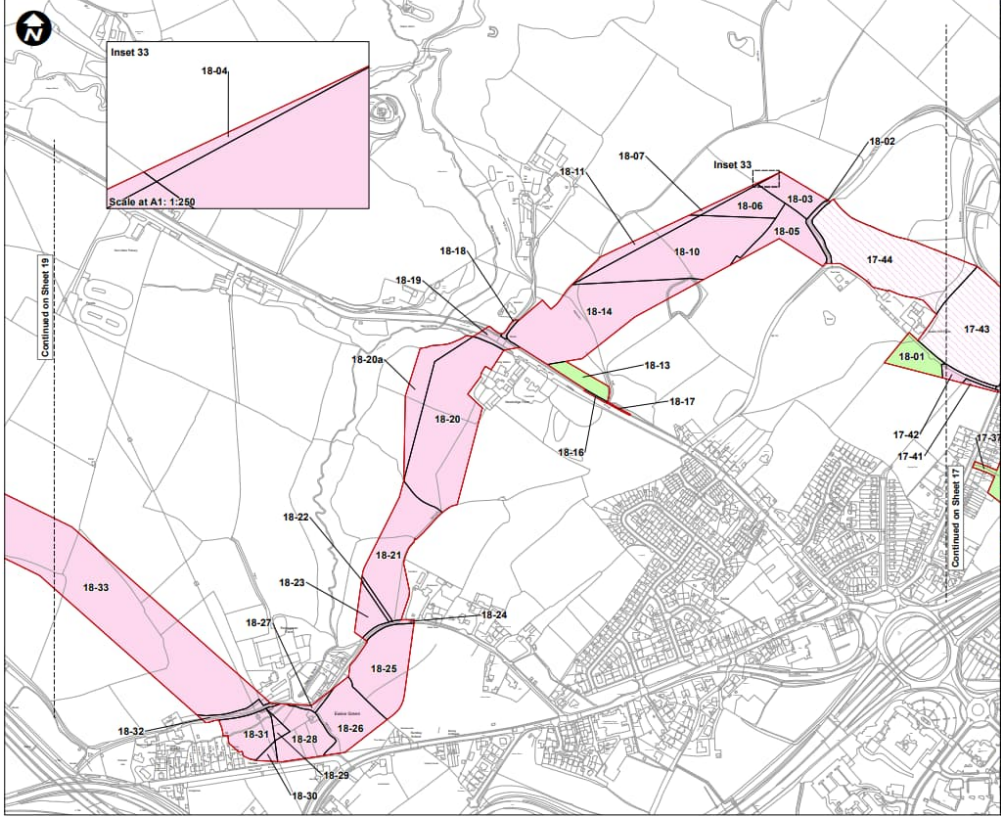
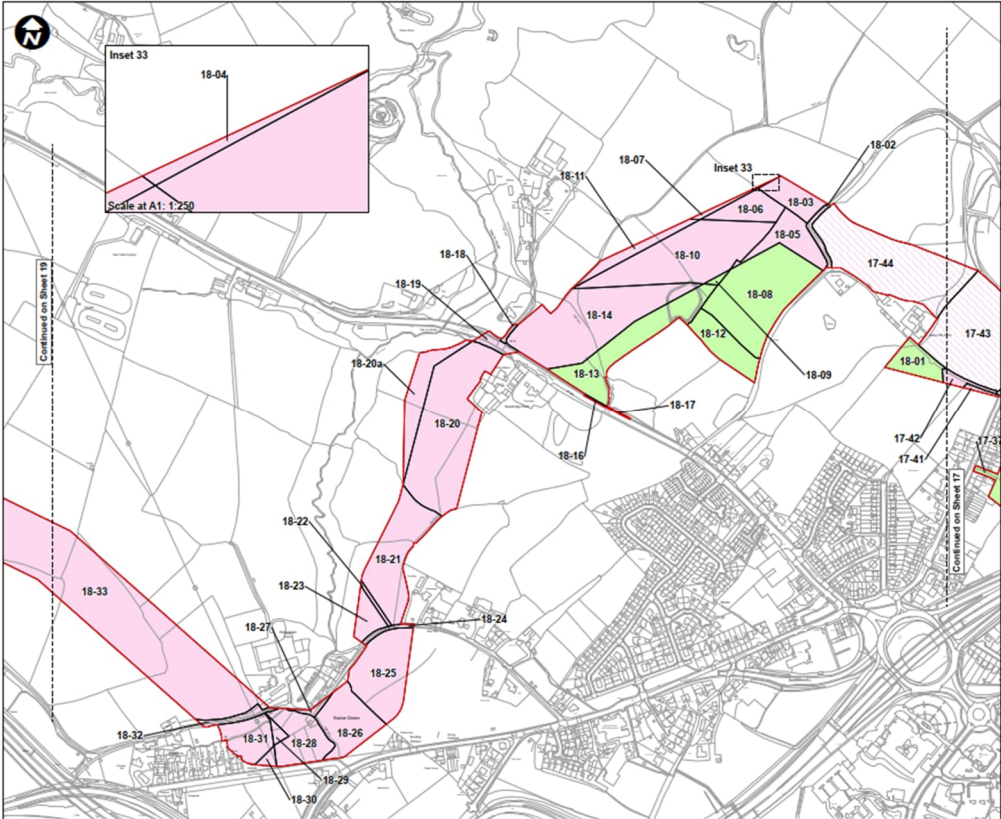


Figure A3 – Before and after the reduction to the Newbuild Infrastructure Boundary at Ince AGI

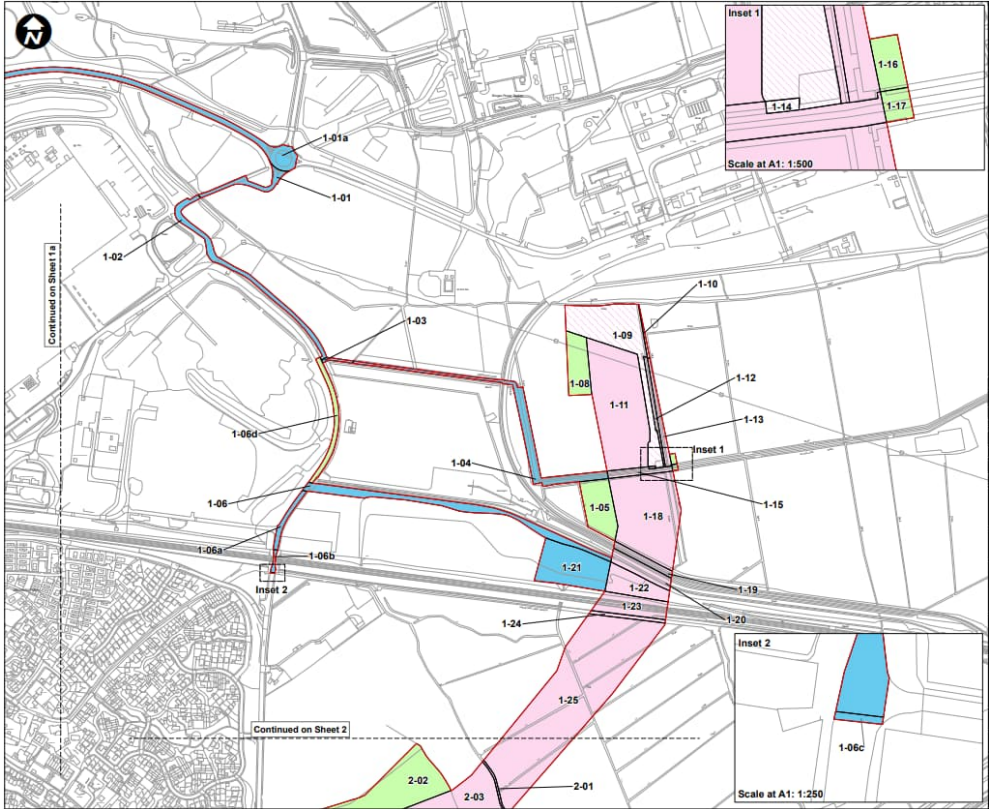
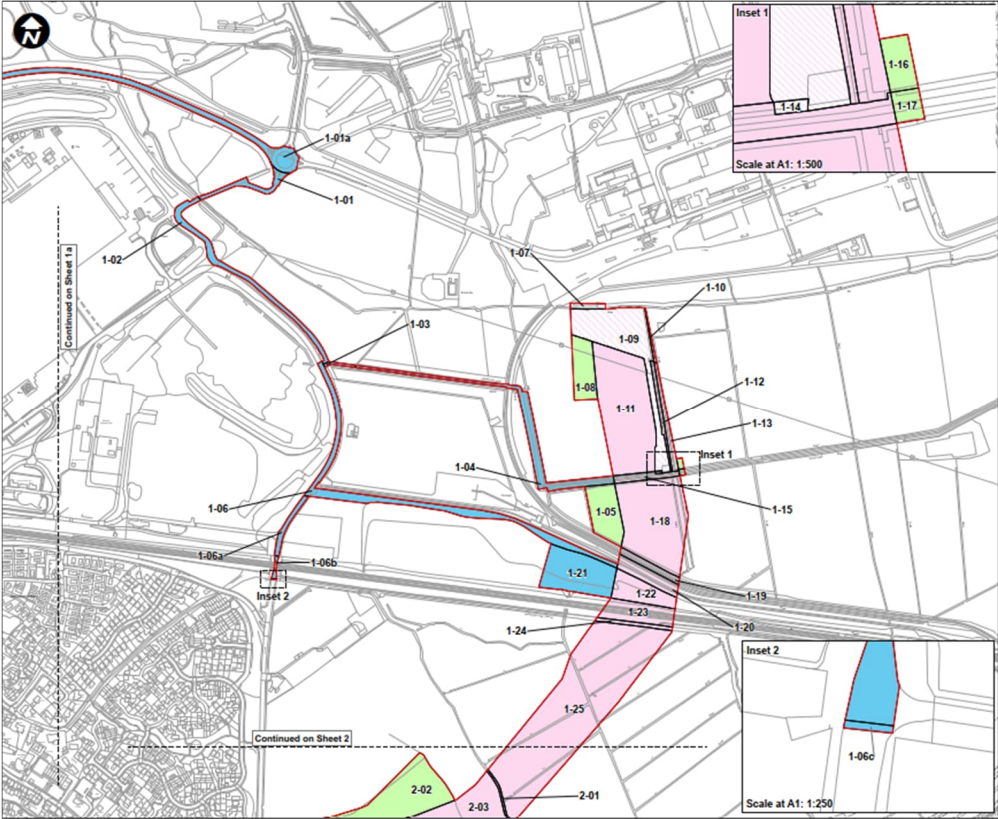


Figure A4 – Before and after the change to Outline Surface Water Drainage Design

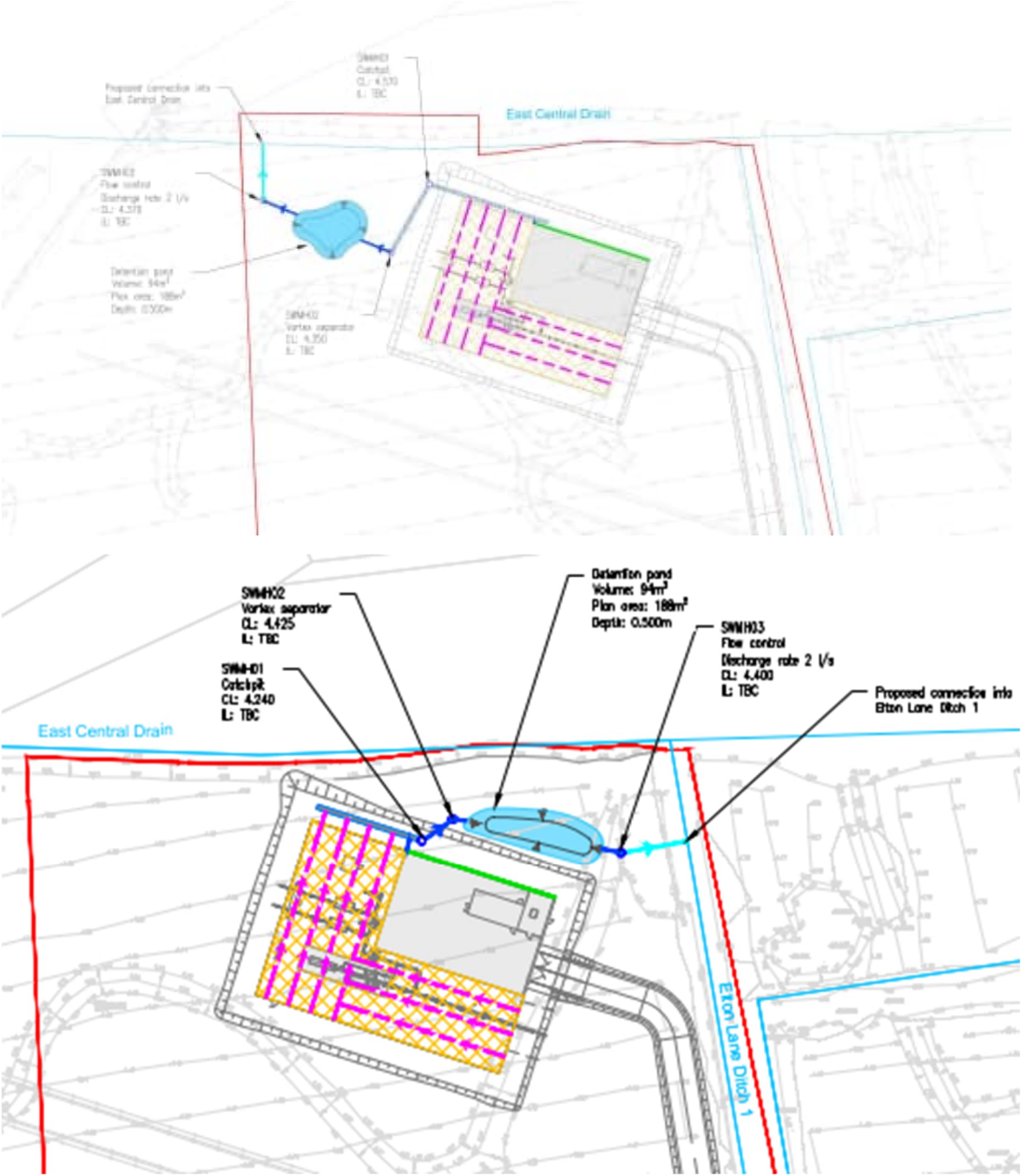


Figure A5 – Before and after the reduced Newbuild Infrastructure Boundary at Picton Lane – Land Plan

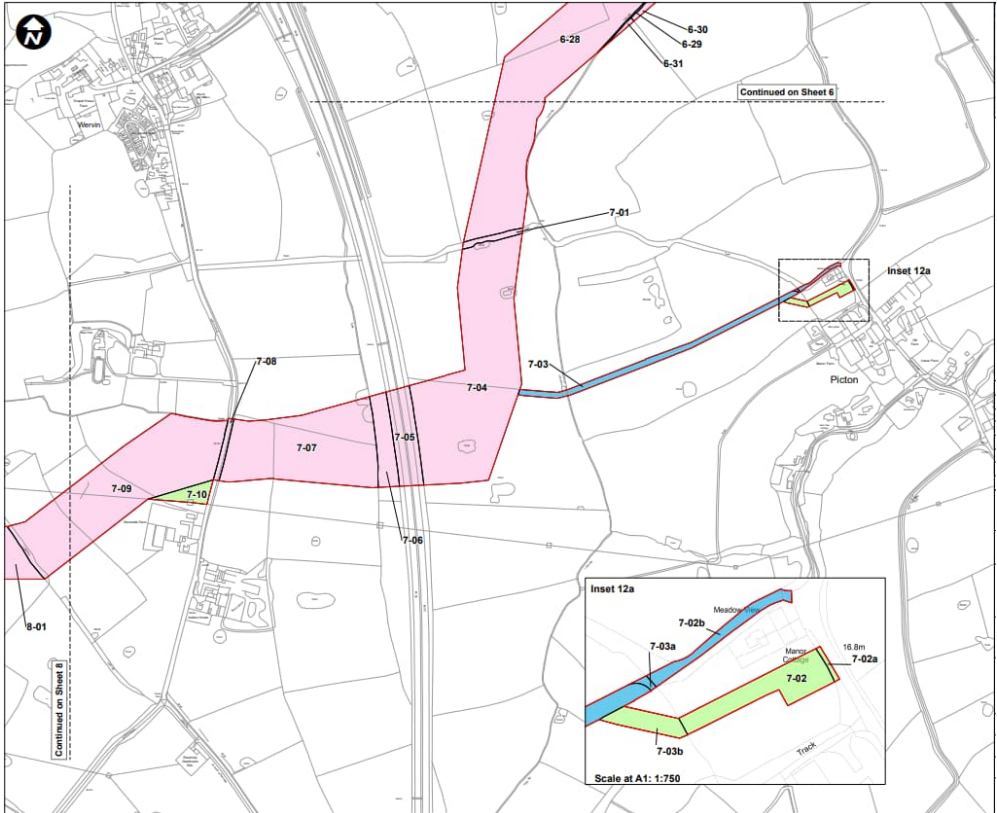
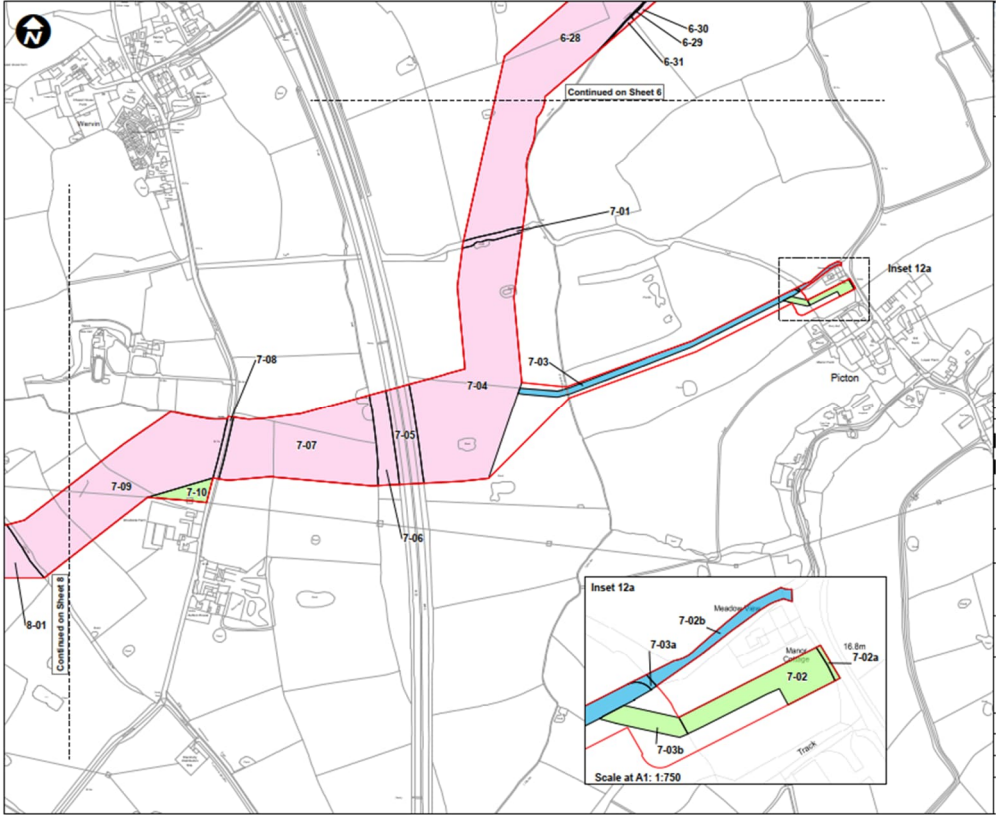


Figure A6 – Before and after the change to land plots Encirc access – Land Plan

